

classsi[®]

MARKET LEADERS IN BATHROOM WATERPROOFING

Product Range and Fitting Instructions

**MULTI
AWARD
WINNING**



classiwaterproofing.com



SHOWERS/ BATHS/ WETROOMS

“
OUR REPUTATION
FOR **QUALITY &**
CARE IS THE
CORNERSTONE
OF **OUR SUCCESS.**”



Contents

Classi Seal	4
Classi Plus	6
Classi waterproofing kit for shower trays and baths	8
Classi waterproofing kit for wet rooms	10
Pack contents	13
Classi Neutral Cure Silicone for bathrooms and kitchens	14
FAQs	15

HISTORY & INTRODUCTION

Classic Marble (Showers) Ltd is a family-run business founded in 1983 and we've been designing and manufacturing shower trays ever since. Our reputation for quality and care is the cornerstone of our success.

We developed our signature product Classi Seal over 10 years ago. It won two innovation awards in the UK and Ireland, as well as the UK Housing Product of the Year, with well over 1 million metres used since its launch!

We now have waterproofing solutions for all kinds of showering and bathroom installations, and we manufacture and supply to both BS EN ISO 9001 Quality Management

System and BS EN ISO 14001 Environmental Standards.

We're deeply committed to quality throughout the design and installation process. That's why, in 2007, we became the founding and ongoing sponsor of the Institute of Kitchen, Bedroom and Bathroom Installers, dedicated to raising standards across the industry.

When you choose Classi, you know you're choosing the best.



classi seal[®]



Installation time 5 mins.

**AWARD
WINNING**

With multiple innovation awards, Classi Seal is a professional, waterproofing solution applied by hand to the wall-facing sides of shower trays or baths prior to installation.

The product can accommodate 15mm of movement, so it's suitable for new builds, repairs or renovations. Classi Seal consists of a flexible waterproof upstand and a modified butyl rubber adhesive.

Classi Seal prevents water leakage around shower trays and baths caused by the shrinkage and movement of buildings.



Winner of
housebuilding
innovation
awards
2008

HOUSING PRODUCT OF THE YEAR

Ideal for finishing with wall panels.

Fitting Instructions

STEP 1

Thoroughly roughen and clean the sides of the tray or bath where the Classi Seal is to be attached.

STEP 2

Remove the backing paper 100mm at a time. Align the top of the adhesive strip with the top edge of the shower tray or bath and firmly press on by hand.

STEP 3

Manipulate and widen the upstand at corners. The upstand is easy to manipulate by hand to fit into irregular internal corners, so tiling will be easier.

STEP 4

Tiling can begin immediately.

Following tiling or wall panelling, finish with a Neutral Cure Sanitary Grade 100% Silicone.

Classi Seal is available in 2m, 2.5m, 3.2m and 4m rolls, to be used in an unbroken, continuous run.



classi[®] *plus*



Installation time 5 mins.

Similar to Classi Seal, Classi Plus acts as a secondary seal between the ledge of the shower tray or bath and the wall.

The Classi Plus upstand has a fleeced outer to work with tile adhesive and liquid sealing membranes. The upstand is 50mm taller than Classi Seal so it's ideal for small format tiles like mosaics or subway tiles.

If you're waterproofing the entire showering area with the Classi Waterproofing Kit for Shower Trays and Baths, fitting Classi Plus is the first stage.

Classi Plus Seal prevents water leakage around shower trays and baths caused by shrinkage and movement of buildings.



Ideal for finishing with tiles.

Fitting Instructions

STEP 1

Thoroughly roughen and clean the sides of the tray or bath where the Classi Plus is to be attached.

STEP 2

Remove the backing paper 100mm at a time and align the top of the adhesive strip with the top edge of the shower tray or bath. Firmly press on by hand.

STEP 3

Before applying around the corners, pinch the Classi Plus to allow extra material in the corners, which helps with subsequent tiling. When finished applying, give the Classi Plus one last rub all the way around to ensure the perfect seal, paying special attention to the corners.

STEP 4

Apply C2 tile (see page 15) adhesive to the wall behind the Classi Plus upstand. Press upstand into adhesive with the back of the trowel, ensuring no air pockets.

Following tiling, finish with a Neutral Cure Sanitary Grade 100% Silicone.

Classi Plus is available in 2m, 2.5m, 3.2m and 4m rolls, to be used in an unbroken, continuous run.



classi[®]

waterproofing kit shower trays & baths



Installation less than 1 hour.
Tiling can begin immediately.

**AWARD
WINNING**

Classi Bathroom Waterproofing Kit, formerly known as CM Seal Tanking Kit, is another award-winning product.

The waterproofing membranes are bonded to already primed walls with C2 powder mix tile adhesive (see page 15), which is applied to the wall with a 4mm square notched trowel. Bucket ready tile adhesive SHOULD NOT be used as it requires air to cure.

The membranes can be applied horizontally or vertically, and overlaps should be at least 75mm wide. The membranes should not be used around corners; instead, use Classi Corner and Joint Tape.



Fitting Instructions

STEP 1

After fitting Classi Plus, apply tile adhesive over upstand and wall. Apply membrane print-side out, starting at the bottom, ensuring a minimum 75mm overlap and a gap of approx 20mm from the corner. Press on firmly with the back of the trowel, ensuring there are no air pockets.



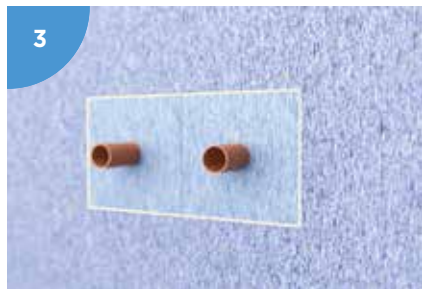
STEP 2

Apply Classi Corner and Joint Tape to the corners, ensuring at least 75mm of overlap on membrane and upstand. Bond onto the membranes with tile adhesive and remove any excess air.



STEP 3

For extruding pipes, push over Classi Pipe collars, bond to the wall with tile adhesive and remove any excess air.



STEP 4

As soon as the Classi membranes are applied to the wall, tiling can begin in the normal way.

Tiling can begin immediately, no waiting time.

Following tiling, finish with a Neutral Cure Sanitary Grade 100% Silicone.

Not sure what size of kit you need? See page 13 for kit sizes and coverage.



classi[®]

waterproofing kit for wet rooms



Installation less than 1 hour.
Tiling can begin immediately.

**AWARD
WINNING**

With the Classi Waterproofing Kit for wetrooms, you can have a wetroom just about anywhere in the house!

To install, membranes should be adhered to already primed wall and floor areas with powder-based tile adhesive, minimum of C2 classification (see page 15), prepared to manufacturer's instructions and applied with a 4mm square notch trowel.

When membranes are applied, use the flat side of the trowel to remove air pockets and spread out excess tile adhesive.



Fitting Instructions

STEP 1

Apply tile adhesive to the floor area.

STEP 2

Apply membrane and carefully cut out the hole for the waste, making sure you leave enough membrane to overlap within the waste fitting.

STEP 3

In the corners, apply adhesive and corner piece.

STEP 4

Apply adhesive and Classi Corner and Joint Tape between the floor and walls.

- Steps 5-8 overleaf

Tiling can begin immediately, no waiting time.

Following tiling, finish with a Neutral Cure Sanitary Grade 100% Silicone.

Not sure what size of kit you need? See page 13 for kit sizes and coverage.



STEP 5

Apply tile adhesive and membranes to the wall, overlapping the Classi Corner and Joint Tape by at least 75mm. Do not apply wall membrane around the corner - leave a gap of approx 20mm between the Classi membrane and the corner.



STEP 6

Apply adhesive and Classi Corner and Joint Tape to the corners.



STEP 7

For extruding pipes, push over Classi Pipe Collars, bonding to the wall with tile adhesive and removing excess air.

STEP 8

Tanking completed, the area is ready to tile immediately.

Tiling can begin immediately, no waiting time.

Following tiling, finish with a Neutral Cure Sanitary Grade 100% Silicone.

Not sure what size of kit you need? See page 13 for kit sizes and coverage.



WHAT SIZE OF KIT DO YOU NEED?

SHOWER TRAY AND BATH KIT

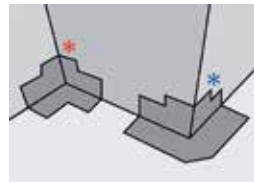
We have three standard size of kits, determined by the length of the wall touching side, outlined in the table below.

	Kit Size Needed
Two wall touching sides up to 2.0m	4.6m ²
Two wall touching sides up to 3.2m	6.5m ²
Wall touching sides up to 4.0m	8.2m ²

Shower Tray and Bath Kit contents			
Kit Size	4.6m ²	6.5m ²	8.2m ²
Classi Waterproofing Membrane*	4.6m ²	6.5m ²	8.2m ²
Classi Plus	2.0m	3.2m	4.0m
Classi Corner and Joint Tape	2.5m	2.5m	5.0m
Classi Pipe Collars	2	2	2
Classi Neutral Cure (310ml) WHITE	1	1	1

WET ROOM KIT

We have three standard size of kits, determined by the area of walls and floors that you want to waterproof.



Wet Room Kit contents			
Kit Size	6.5m ²	8.2m ²	11.1m ²
Classi Waterproofing Membrane*	6.5m ²	8.2m ²	11.1m ²
Classi Corner and Joint Tape	7.5m	7.5m	7.5m
Classi Internal Corner*	2	2	2
Classi External Corner*	1	1	1
Classi Pipe Collars	2	2	2
Classi Neutral Cure (310ml) WHITE	1	1	1

* Each Membrane is 1m in width



classi[®]

neutral cure

Classi Neutral Cure Sanitary Grade 100% Silicone is a premium, low modulus silicone specifically designed for excellent adhesion and sealing joints in the bathroom and kitchen where movement is expected.

It's easy to use, practically odourless when curing, is mould- and mildew-resistant and conforms to ISO11600-F&G-25LM.

We recommend it for use with all our Classi products.

'For the perfect finish'

A⁺ RATED

Sanitary Grade Silicone

Available
in White
and Clear



FAQs

What is a Neutral Cure Silicone?

Silicones are generally classed as Acetoxy Cure or Neutral Cure. Acetoxy Cure Silicone gives off acetic acid when curing, which smells like vinegar, whereas Neutral Cure Silicone is relatively odourless, releasing alcohol during the curing process.

Acetoxy silicones are usually much cheaper because they contain added solvents. They're often marketed as general purpose, but they have numerous limitations printed on the tubes. That's why so many manufacturers, including us, recommend Neutral Cure Silicones.

What is C2 Tile Adhesive?

The C stands for Cementitious, which means it comes in powder form and you add water. Powder-based tile adhesive doesn't need air to cure, so it's perfect to bond our membranes to walls and floors, as the membranes act as a water and vapour barrier. Bucket-ready tile adhesive needs air to cure and **SHOULD NOT** be used to bond Classi waterproofing membranes.

The 2 in C2 stands for improved adhesive, following on from C1 which is normal adhesive. Adhesive is put through a series of tests including freeze/thaw cycles and water immersion cycles, then the bond strengths are measured after 28 days. C1 is greater than 0.5 N/mm² after the cycles and C2 is greater than 1 N/mm².

How much C2 tile adhesive will you need?

You'll need approx 3kg per m² of Classi Waterproofing Membrane.

CLASSI. WATERPROOFING PRODUCTS FOR ANY BATHROOM INSTALLATION



classsi[®]

Classic Marble (Showers) Ltd

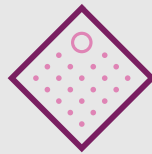
185 Omagh Road
Ballygawley
Co. Tyrone
N. Ireland
BT70 2AL

T: +44 (0)28 855 68081

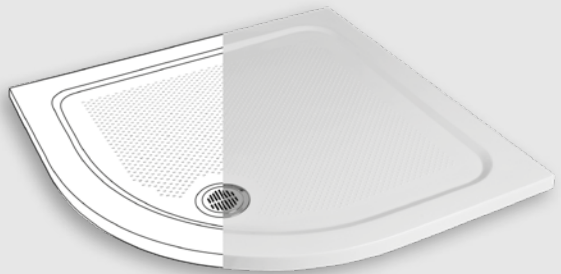
W: classiwaterproofing.com

E: info@classic-marble.com

Classic Marble (Showers) Ltd
BS EN ISO 9001 Quality Management System
BS EN ISO 14001 Environmental Management



SENSTEC
ANTI-SLIP SHOWER TRAY



(UK Patent No. GB2551138)
(EU Patent No. EP3463021) (US Patent No. 10,765,268)

